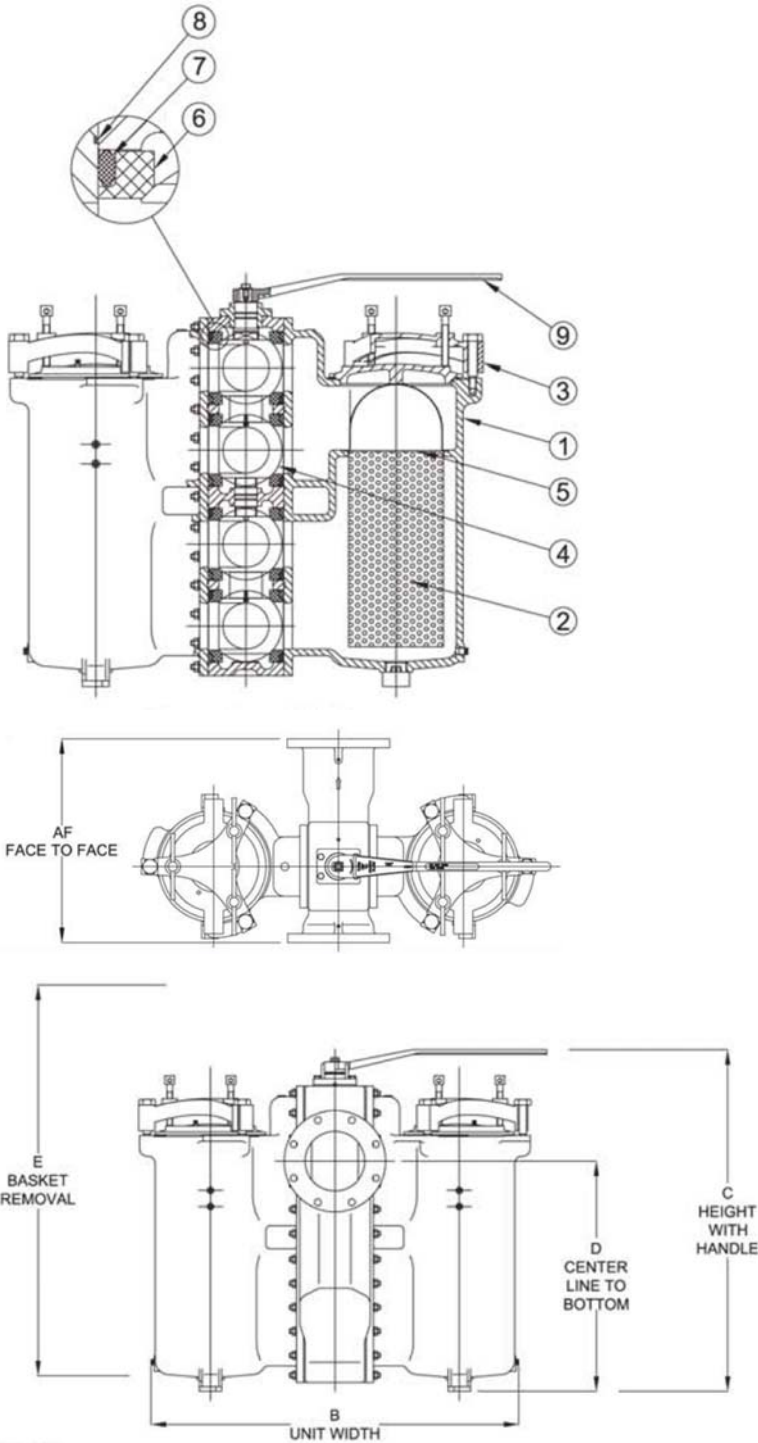


STAYFLOW

DIFL Cast Iron - 125# Flanged Strainers



PRESSURE RATING (psig) ANSI CLASS 125

W.O.G.	STEAM
200 @ 150 F	N R

MATERIAL TEMPERATURE RATINGS

- BUNA-N = -20 TO 250 F
- VITON = -40 TO 400 F
- Stainless Steel Ball = 450 F max

BILL OF MATERIALS

ITEM	DESCRIPTION	MATERIAL
1	Housing	Cast Iron - A126 Gr. B
2	Straining Element	Stainless
3	Cover	Cast Iron - A126 Gr. B
4	Ball	Stainless Steel Type 304
5	Straining Element O-ring	Buna-N
6	Seat	PTFE
7	Seal	Buna-N
8	Body O-ring	Buna-N
9	Handle	Carbon Steel - Zinc Coated

DEFAULT SCREEN - 1/8" PERFORATIONS, 41% OPEN AREA
ALUMINUM BRONZE BODEIS ALSO AVAILABLE

DIMENSIONS (in) / PERFORMANCE

SIZE	A	B	C	D	E	Cv	Wt. (lb)
6	22	35.31	35.63	24.45	48	429	850
8	26.75	48.50	45.12	30.39	62	776	726

ASME B16.1 - GRAY IRON PIPE FLANGES AND FLANGE FITTINGS

ASME/ANSI B16.5 - PIPE FLANGES AND FLANGED FITTINGS