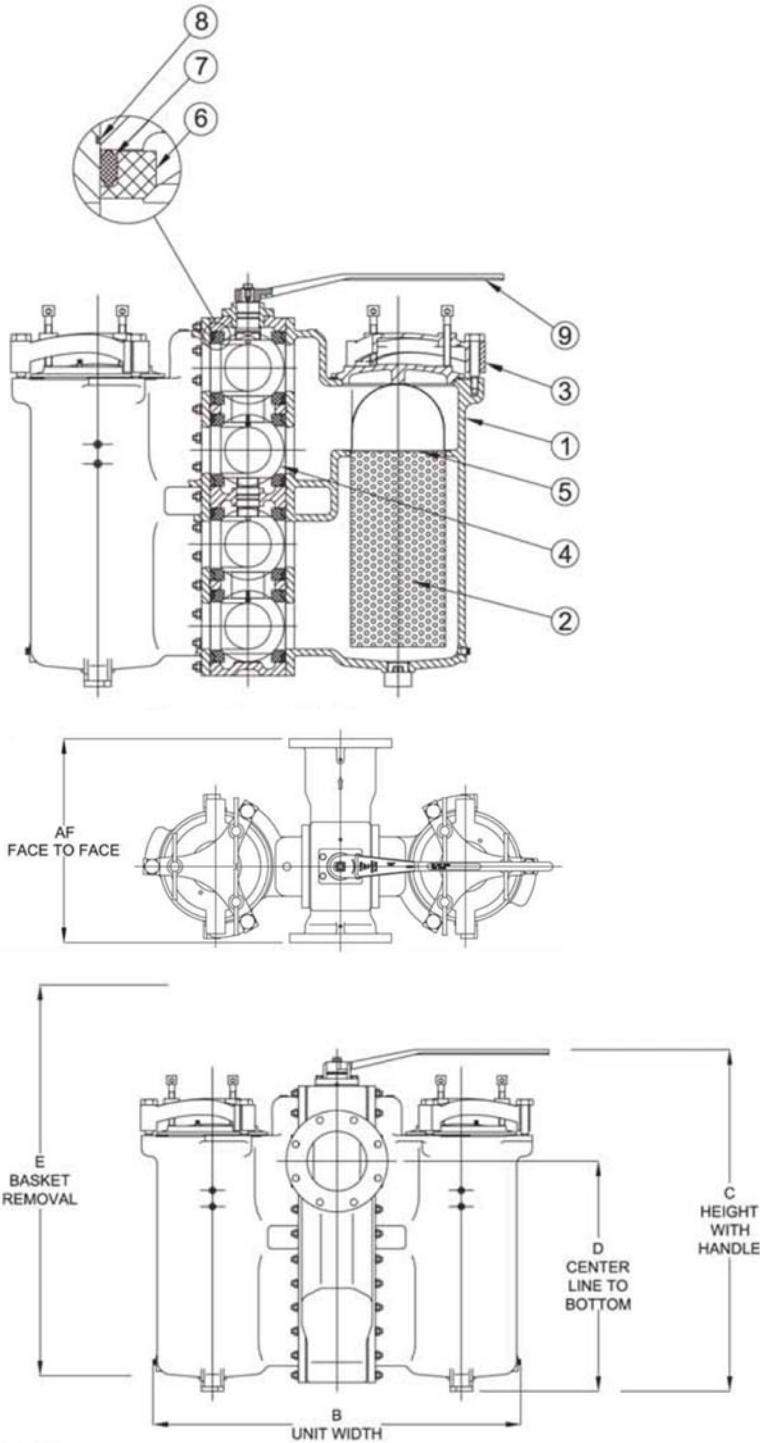


STAYFLOW

DCFL Carbon Steel - 150# Flanged Strainers



PRESSURE RATING (psig) ANSI CLASS 150

| W.O.G. | STEAM |
|-------------|-------|
| 285 @ 100 F | N R |

MATERIAL TEMPERATURE RATINGS

- BUNA-N = -20 TO 250 F
- VITON = -40 TO 400 F
- Stainless Steel Ball = 450 F max

BILL OF MATERIALS

| ITEM | DESCRIPTION | MATERIAL |
|------|--------------------------|-----------------------------|
| 1 | Housing | Carbon Steel - A216 Gr. WCB |
| 2 | Straining Element | Stainless |
| 3 | Cover | Carbon Steel - A216 Gr. WCB |
| 4 | Ball | Stainless Steel Type 304 |
| 5 | Straining Element O-ring | Buna-N |
| 6 | Seat | PTFE |
| 7 | Seal | Viton |
| 8 | Body O-ring | Buna-N |
| 9 | Handle | Carbon Steel - Zinc Coated |

DEFAULT SCREEN - 1/8" PERFORATIONS, 41% OPEN AREA
ALUMINUM BRONZE BODEIS ALSO AVAILABLE

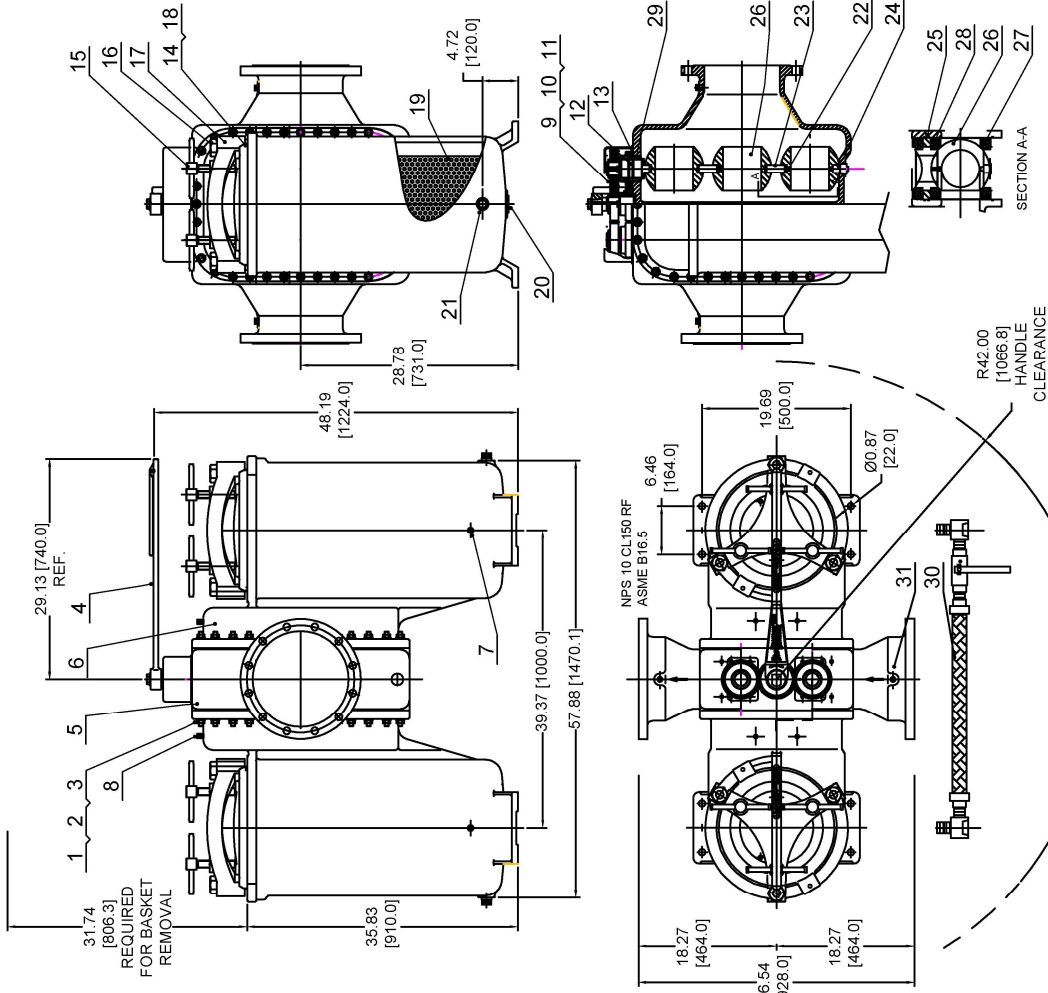
DIMENSIONS (in) / PERFORMANCE

| SIZE | A | B | C | D | E | Cv | Wt. (lb) |
|------|-------|-------|-------|-------|----|-----|----------|
| 6 | 22 | 35.31 | 35.63 | 24.45 | 48 | 429 | 850 |
| 8 | 26.75 | 48.50 | 45.12 | 30.39 | 62 | 776 | 726 |

ASME/ANSI B16.11 - FORGED STEEL FITTINGS, SOCKET-WELDING AND THREADS
ASME/ANSI B16.5 - PIPE FLANGES AND FLANGED FITTINGS

NOTES
 PRESSURE & TEMPERATURE RATING
 285 PSI @ 100°F WOG NON SHOCK
 MAX. RECOMMEND TEMP @ 200°F: 235 F°
 DESIGNED IN ACCORDANCE WITH:
 ASME B16.5, B16.34
 TEST & INSPECTION IN ACCORDANCE WITH:
 API 598
 SHELL TEST @ 1.5 TIMES WOG
 DIMENSIONS IN INCHES

SPECIAL FEATURES:
 1.



REVISIONS

| NO. | DESCRIPTION | DATE |
|-----|-------------|------|
| - | - | - |
| - | - | - |
| - | - | - |
| - | - | - |
| - | - | - |
| - | - | - |
| - | - | - |

PROPRIETARY AND CONFIDENTIAL
 ANY REPRODUCTION IN PART OR AS A WHOLE
 WITHOUT THE WRITTEN PERMISSION OF
 TITAN FLOW CONTROL, INC IS
 PROHIBITED.

DRAWING FOR:
 -
 -

| NO. | ITEM | QTY. | DESCRIPTION | MATERIAL |
|-----|------------------|------|-------------|------------------------|
| 1 | STUD | 68 | | A193 B7 |
| 2 | NUT | 68 | | A194 2H |
| 3 | WASHER | 68 | | 1020 (ZINC COATED) |
| 4 | HANDLE ASSEMBLY | 1 | | A216 WCB (ZINC COATED) |
| 5 | BODY | 1 | | A216 WCB |
| 6 | HOUSING | 2 | | A216 WCB |
| 7 | PLUG | 4 | 1/4" NPT | A105 |
| 8 | VENT VALVE | 4 | 1/8" NPT | BRASS B36 |
| 9 | SHAFT GEAR ASSY | 1 | | A182 316 |
| 10 | GEAR COVER | 1 | | A320 B8 |
| 11 | HARDWARE | 1 | | 1020 (ZINC COATED) |
| 12 | O-RING | 8 | | BUNA |
| 13 | O-RING | 2 | | BUNA |
| 14 | O-RING | 2 | | BUNA |
| 15 | T-BOLT ASSEMBLY | 6 | | A193 B7 (ZINC COATED) |
| 16 | YOKE STUD | 6 | | A193 B7 (ZINC COATED) |
| 17 | YOKE | 2 | | A216 WCB |
| 18 | BASKET COVER | 2 | 1/8" PERF | A216 WCB |
| 19 | BASKET | 2 | | A276 304 |
| 20 | PLUG | 2 | 2" NPT | A105 |
| 21 | PLUG | 2 | 1/2" NPT | A105 |
| 22 | LOCATION PIN | 4 | | A182 304 |
| 23 | CONNECTION BLOCK | 2 | | A182 316 |
| 24 | LOWER SHAFT | 1 | | A182 316 |
| 25 | O-RING | 12 | | BUNA |
| 26 | BALL | 6 | | A182 304 |
| 27 | SEAT | 12 | | PTFE |
| 28 | SEAL | 12 | | BUNA |
| 29 | CENTER SEAT | 2 | | A216 WCB |
| 30 | PRESSURE EQ. KIT | 1 | | BRASS B36 |
| 31 | PLUG | 2 | 1/8" NPT | A105 |
| 32 | BOLT | 4 | | A193 B7 (ZINC COATED) |



TITLE:
 DCFLTI1000 10' 150# STEEL
 THREE PIECE DUPLEX

SIZE DWG. NO.
 A AN-10.00-DS696CS-000

SCALE: -
 WEIGHT: -
 SHEET 1 OF 1

| NAME | DATE |
|------|----------|
| SS | 10/31/18 |
| GM | 10/31/18 |
| - | - |
| - | - |

| DRAWN | CHECKED | ENG APPR. | MFG APPR. | Q.A. |
|-------|---------|-----------|-----------|------|
| - | - | - | - | - |
| - | - | - | - | - |
| - | - | - | - | - |

TOLERANCES UNLESS OTHERWISE SPECIFIED:
 INCHES
 XXX = ±0.010
 XX = ±0.020
 METRIC
 XXX = ±0.25
 X = ±0.5
 ANGULAR ±0.5
 CASTING
 XX = ±0.094
 1/16" = 125 MICROMETERS MAX. OR
 .517 MILLIMETERS MAX.

MATERIAL
 -
 FINISH
 -
 DO NOT SCALE DRAWING