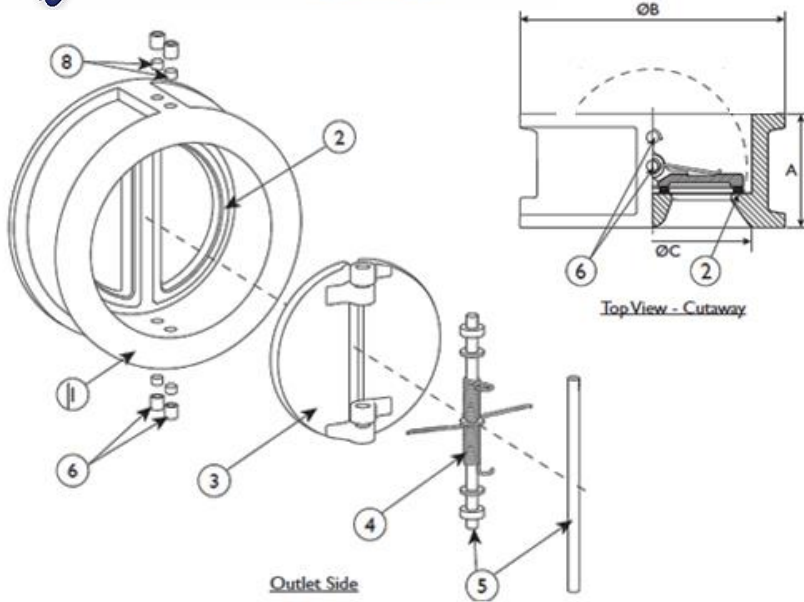




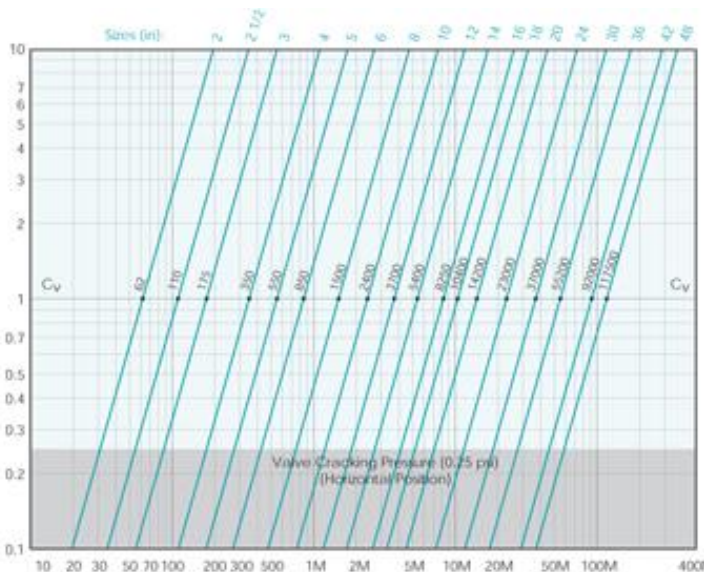
VCDD-CW1SBT Double Disc Check Valve

Wafer Style, Class 150 Carbon Steel Body, SS Disc, Buna-N Seat

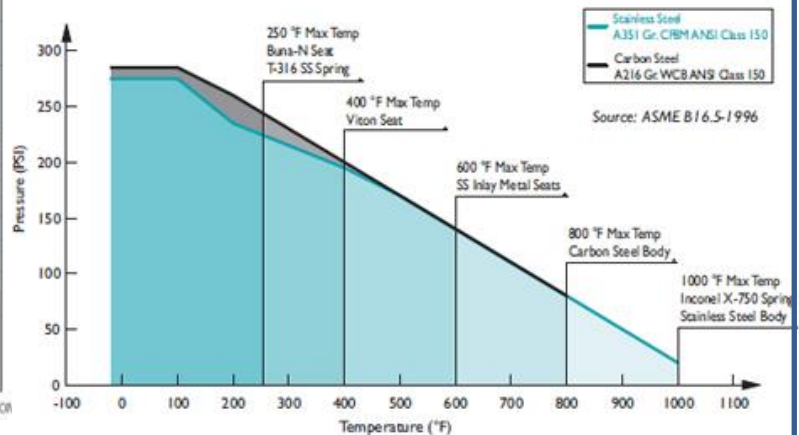


BILL OF MATERIALS		
NO.	PART	MATERIAL
1	Body	Carbon Steel A216 Gr. WCB
2	Seat	Buna-N
3	Disc	Stainless Steel A351 Gr. CF8M
4	Spring	T-316 SS
5	Shaft/Stop Pin	Stainless Steel A276 Gr. 316
6	Cap	Carbon Steel ASTM A105
7	Eye Bolt	Carbon Steel

DIMENSIONS & PERFORMANCE DATA														
SIZE	2	2.5	3	4	5	6	8	10	12	14	16	18	20	24
A (in)	2.38	2.62	2.88	2.88	3.38	3.87	5.00	5.75	7.12	7.25	7.50	8.00	8.62	8.75
B (in)	2.00	2.50	3.00	4.00	5.00	6.52	8.00	10.00	12.00	13.26	15.24	17.24	19.50	23.42
C (in)	2.16	2.67	3.23	4.25	5.12	6.38	8.66	10.63	12.60	13.78	15.75	17.24	19.50	23.42
D (in)	4.33	5.04	5.31	7.05	8.43	9.81	10.91	13.27	16.02	17.64	20.15	21.54	23.78	28.15
WT (lb)	5.5	8.0	10.0	15.5	23.5	36.0	51.5	88.0	131.0	178.0	242.0	276.0	362.0	462.0
F (in)	.94	1.69	2.36	3.54	4.45	5.31	7.13	8.82	10.47	11.81	14.29	15.87	18.03	22.28
Cx	62	110	175	350	550	850	1500	2400	3700	5400	8250	10400	14200	23000



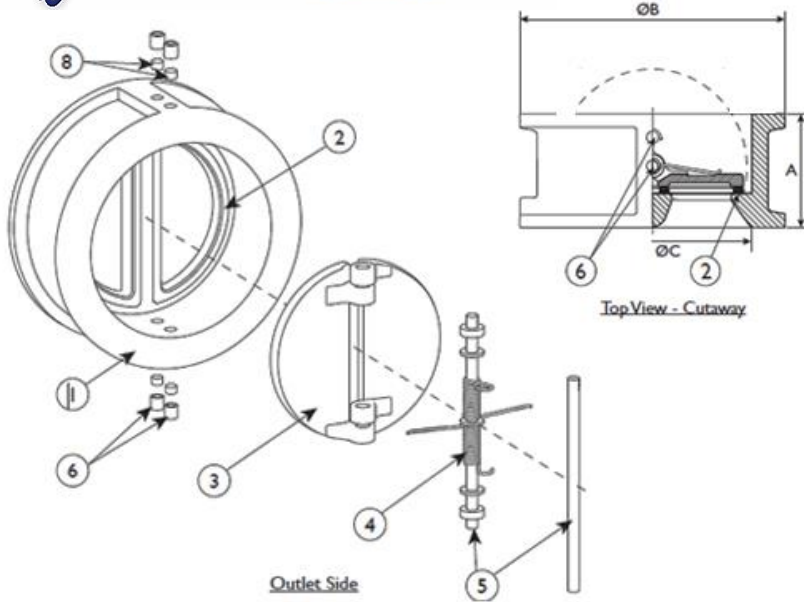
PRESS/TEMP RATINGS	
WOG	285PSI @ 100°F
Buna-N	-20 to 250°F MAX
Spring	450°F





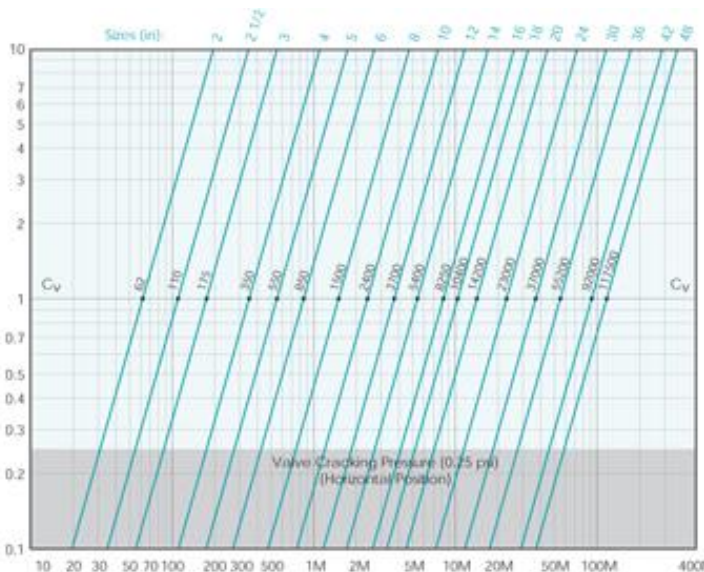
VCDD-CW1SVT Double Disc Check Valve

Wafer Style, Class 150, Carbon Steel Body, SS Disc, Viton Seat

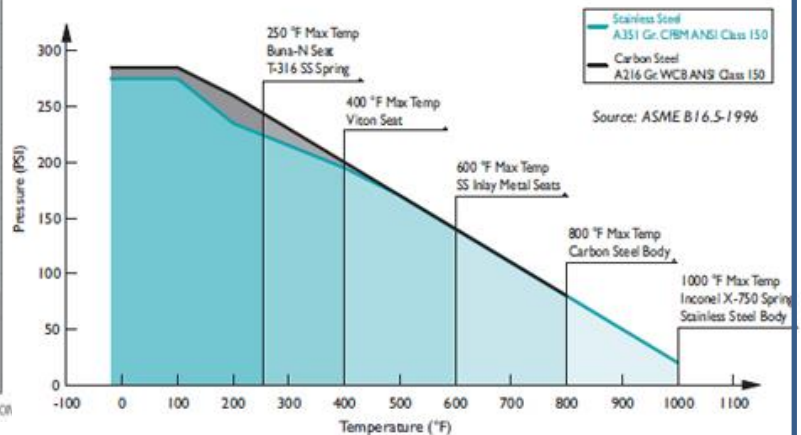


BILL OF MATERIALS		
NO.	PART	MATERIAL
1	Body	Carbon Steel A216 Gr. WCB
2	Seat	Viton
3	Disc	Stainless Steel A351 Gr. CF8M
4	Spring	Inconel X-750
5	Shaft/Stop Pin	Stainless Steel A276 Gr. 316
6	Cap	Carbon Steel ASTM A105
7	Eye Bolt	Carbon Steel

DIMENSIONS & PERFORMANCE DATA														
SIZE	2	2.5	3	4	5	6	8	10	12	14	16	18	20	24
A (in)	2.38	2.62	2.88	2.88	3.38	3.87	5.00	5.75	7.12	7.25	7.50	8.00	8.62	8.75
B (in)	2.00	2.50	3.00	4.00	5.00	6.52	8.00	10.00	12.00	13.26	15.24	17.24	19.50	23.42
C (in)	2.16	2.67	3.23	4.25	5.12	6.38	8.66	10.63	12.60	13.78	15.75	17.24	19.50	23.42
D (in)	4.33	5.04	5.31	7.05	8.43	9.81	10.91	13.27	16.02	17.64	20.15	21.54	23.78	28.15
WT (lb)	5.5	8.0	10.0	15.5	23.5	36.0	51.5	88.0	131.0	178.0	242.0	276.0	362.0	462.0
F (in)	.94	1.69	2.36	3.54	4.45	5.31	7.13	8.82	10.47	11.81	14.29	15.87	18.03	22.28
Cx	62	110	175	350	550	850	1500	2400	3700	5400	8250	10400	14200	23000



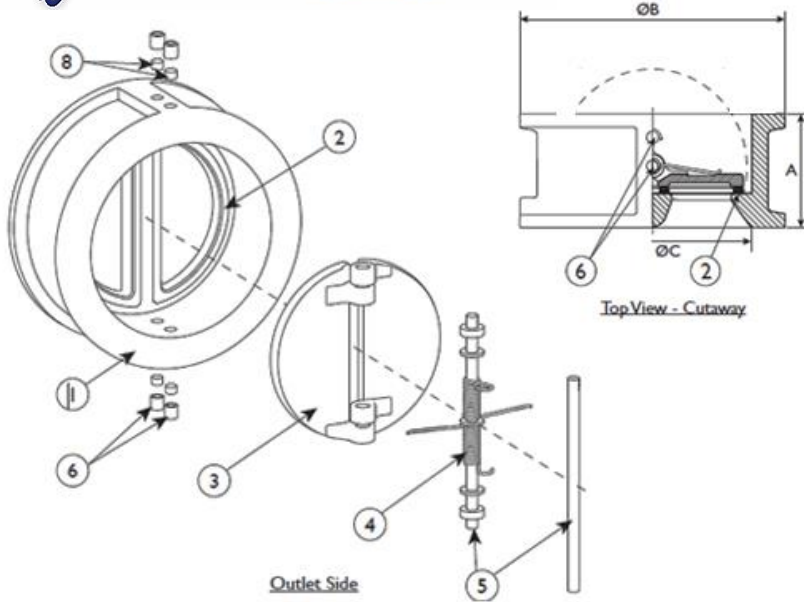
PRESS/TEMP RATINGS	
WOG	285PSI @ 100°F
Viton	-40 to 400°F MAX
Spring	1000°F





VCDD-CW1SXT Double Disc Check Valve

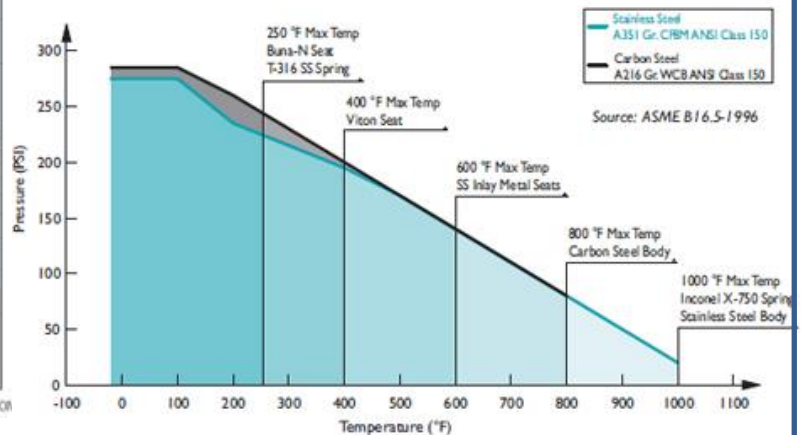
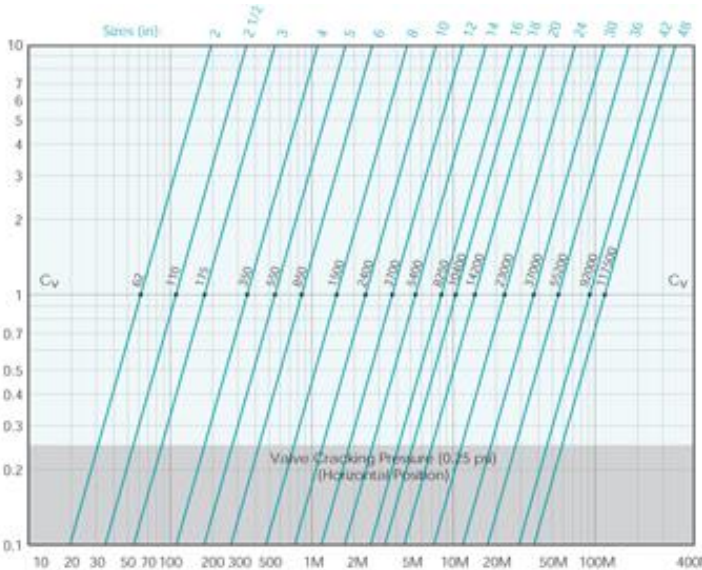
Wafer Style, Class 150, Carbon Steel Body, SS Disc, SS Seat



BILL OF MATERIALS		
NO.	PART	MATERIAL
1	Body	Carbon Steel A216 Gr. WCB
2	Seat	Stainless Steel
3	Disc	Stainless Steel A351 Gr. CF8M
4	Spring	Inconel X-750
5	Shaft/Stop Pin	Stainless Steel A276 Gr. 316
6	Cap	Carbon Steel ASTM A105
7	Eye Bolt	Carbon Steel

DIMENSIONS & PERFORMANCE DATA														
SIZE	2	2.5	3	4	5	6	8	10	12	14	16	18	20	24
A (in)	2.38	2.62	2.88	2.88	3.38	3.87	5.00	5.75	7.12	7.25	7.50	8.00	8.62	8.75
B (in)	2.00	2.50	3.00	4.00	5.00	6.52	8.00	10.00	12.00	13.26	15.24	17.24	19.50	23.42
C (in)	2.16	2.67	3.23	4.25	5.12	6.38	8.66	10.63	12.60	13.78	15.75	17.24	19.50	23.42
D (in)	4.33	5.04	5.31	7.05	8.43	9.81	10.91	13.27	16.02	17.64	20.15	21.54	23.78	28.15
WT (lb)	5.5	8.0	10.0	15.5	23.5	36.0	51.5	88.0	131.0	178.0	242.0	276.0	362.0	462.0
F (in)	.94	1.69	2.36	3.54	4.45	5.31	7.13	8.82	10.47	11.81	14.29	15.87	18.03	22.28
Cx	62	110	175	350	550	850	1500	2400	3700	5400	8250	10400	14200	23000

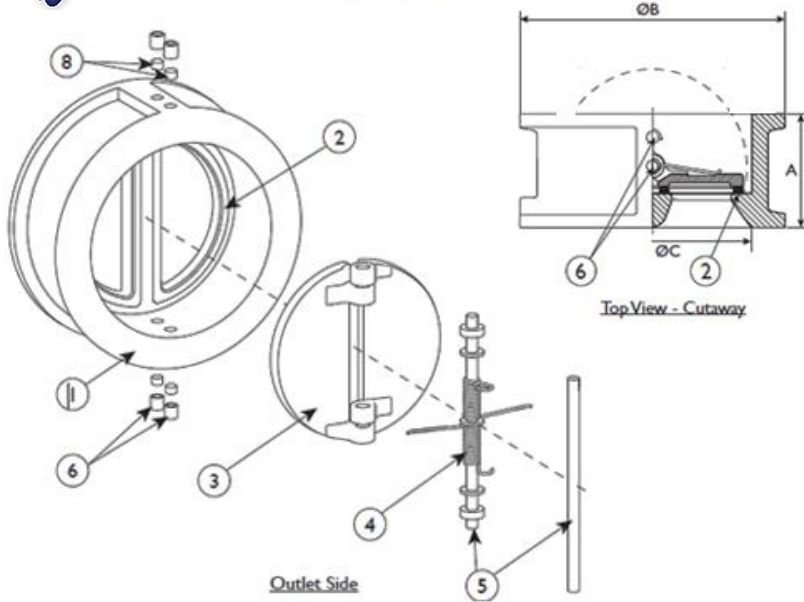
PRESS/TEMP RATINGS	
WOG	285PSI @ 100°F





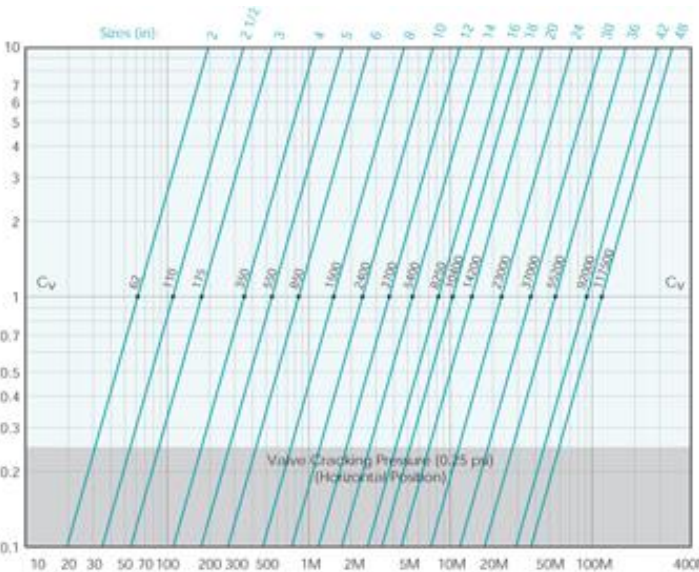
VCDD-CW2SBT Double Disc Check Valve

Wafer Style, Class 300, Carbon Steel Body, SS Disc, Buna-N Seat

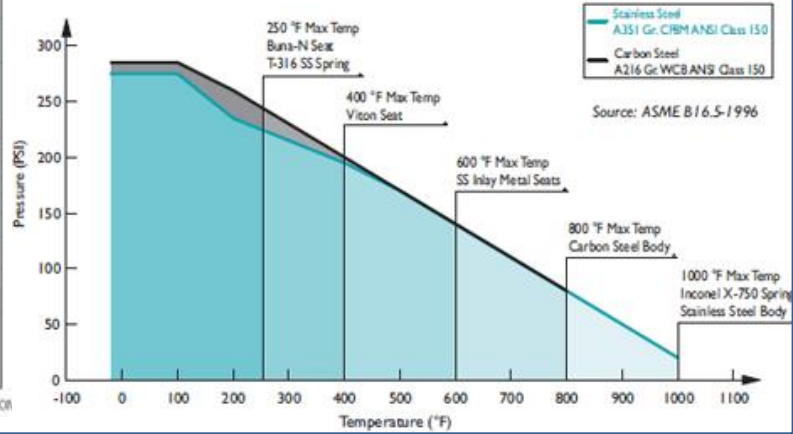


BILL OF MATERIALS		
NO.	PART	MATERIAL
1	Body	Carbon Steel A216 Gr. WCB
2	Seat	Buna-N
3	Disc	Stainless Steel A351 Gr. CF8M
4	Spring	Inconel X-750
5	Shaft/Stop Pin	Stainless Steel A276 Gr. 316
6	Cap	Carbon Steel ASTM A105

DIMENSIONS & PERFORMANCE DATA														
SIZE	2	2.5	3	4	5	6	8	10	12	14	16	18	20	24
A (in)	2.38	2.62	2.88	2.88	3.38	3.88	5.00	5.75	7.12	8.75	9.12	10.38	11.50	12.50
B (in)	4.06	4.81	5.31	6.81	7.69	8.69	12.00	14.13	16.56	19.00	21.13	23.28	25.69	30.38
C (in)	2.00	2.56	3.13	4.00	5.00	6.00	8.00	10.00	12.00	13.25	15.25	17.25	19.50	23.44
D (in)	2.19	2.69	3.25	4.25	5.12	6.50	8.69	10.63	12.63	13.75	15.75	17.25	19.50	23.44
E (in)	0.75	1.69	2.38	3.56	4.44	5.31	7.13	8.75	10.44	11.81	14.19	15.81	17.81	21.63
WT (lb)	5.5	8.0	10.0	15.5	23.5	36.0	66.0	102.0	156.0	236.0	302.0	390.0	540.0	670.0
Cx	62	110	175	350	550	850	1500	2400	3700	5400	8250	10400	14200	23000



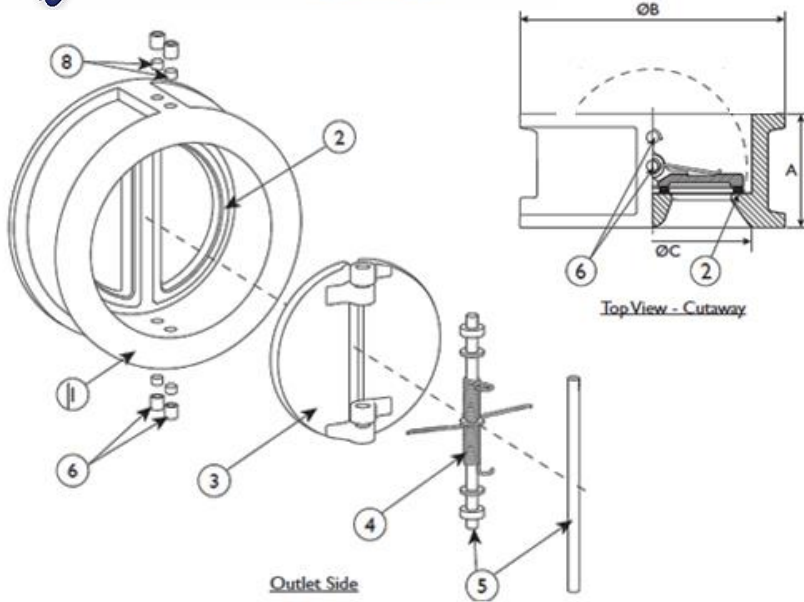
PRESS/TEMP RATINGS	
WOG	740PSI @ 100°F
Buna-N	-20 to 250°F MAX





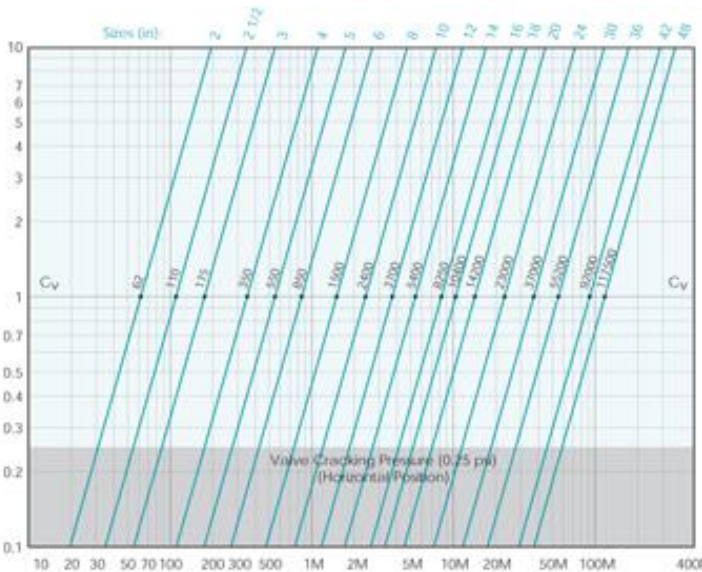
VCDD-CW2SVT Double Disc Check Valve

Wafer Style, Class 300, Carbon Steel Body, SS Disc, Viton Seat

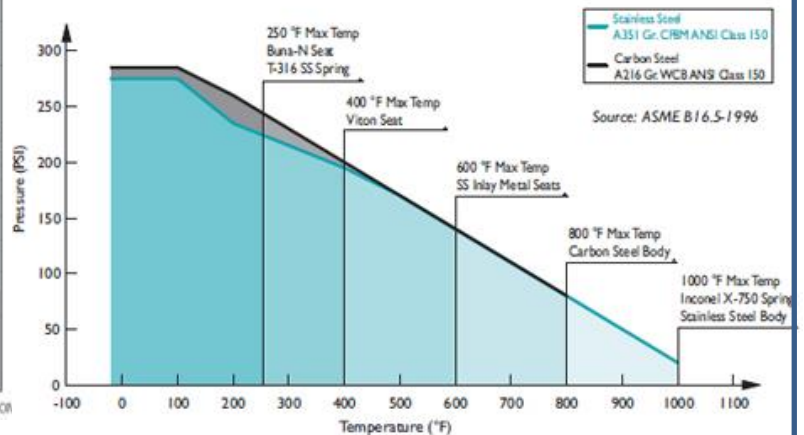


BILL OF MATERIALS		
NO.	PART	MATERIAL
1	Body	Carbon Steel A216 Gr. WCB
2	Seat	Viton
3	Disc	Stainless Steel A351 Gr. CF8M
4	Spring	Inconel X-750
5	Shaft/Stop Pin	Stainless Steel A276 Gr. 316
6	Cap	Carbon Steel ASTM A105

DIMENSIONS & PERFORMANCE DATA														
SIZE	2	2.5	3	4	5	6	8	10	12	14	16	18	20	24
A (in)	2.38	2.62	2.88	2.88	3.38	3.88	5.00	5.75	7.12	8.75	9.12	10.38	11.50	12.50
B (in)	4.06	4.81	5.31	6.81	7.69	8.69	12.00	14.13	16.56	19.00	21.13	23.28	25.69	30.38
C (in)	2.00	2.56	3.13	4.00	5.00	6.00	8.00	10.00	12.00	13.25	15.25	17.25	19.50	23.44
D (in)	2.19	2.69	3.25	4.25	5.12	6.50	8.69	10.63	12.63	13.75	15.75	17.25	19.50	23.44
E (in)	0.75	1.69	2.38	3.56	4.44	5.31	7.13	8.75	10.44	11.81	14.19	15.81	17.81	21.63
WT (lb)	5.5	8.0	10.0	15.5	23.5	36.0	66.0	102.0	156.0	236.0	302.0	390.0	540.0	670.0
Cx	62	110	175	350	550	850	1500	2400	3700	5400	8250	10400	14200	23000



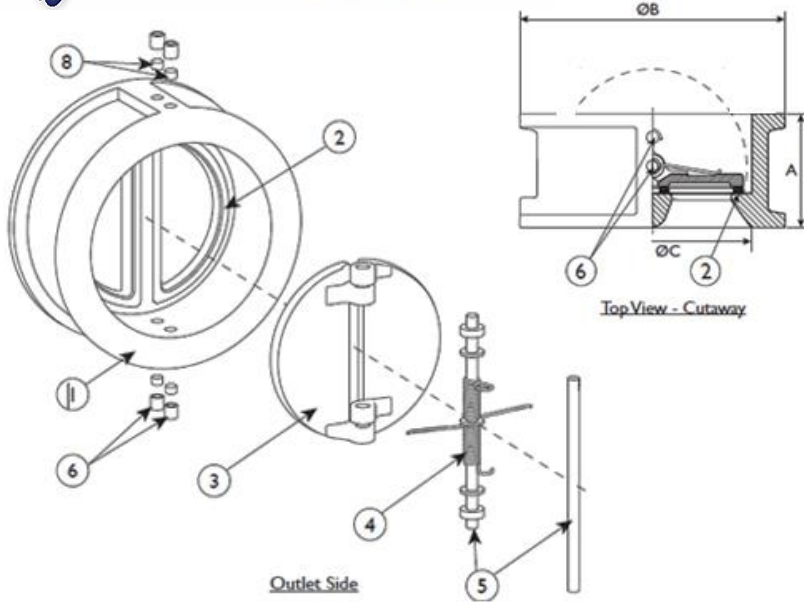
PRESS/TEMP RATINGS	
WOG	740PSI @ 100°F
Viton	-40 to 400°F MAX
Spring	1000°F





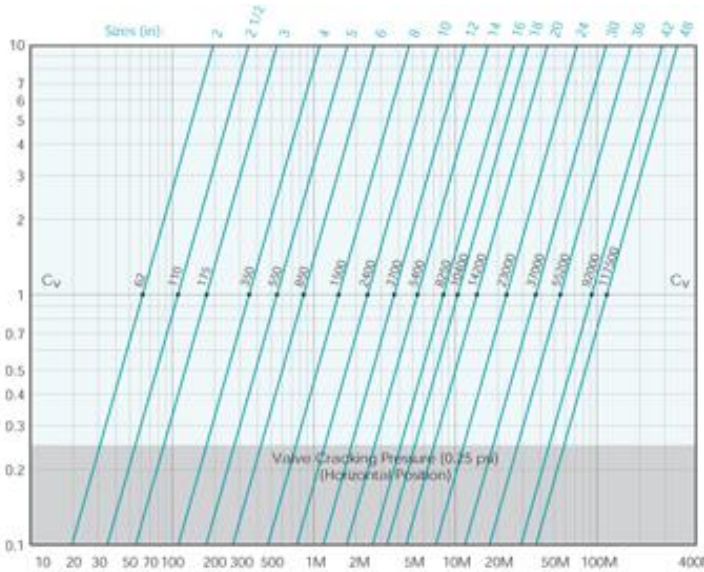
VCDD-CW2SXT Double Disc Check Valve

Wafer Style, Class 300, Carbon Steel Body, SS Disc, SS Seat

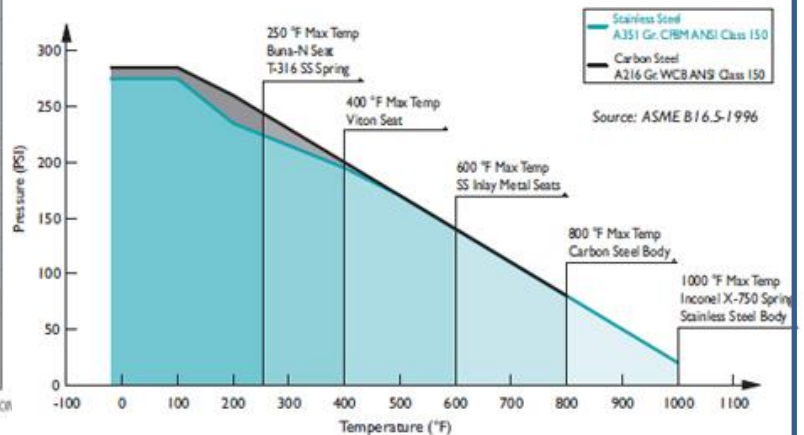


BILL OF MATERIALS		
NO.	PART	MATERIAL
1	Body	Carbon Steel A216 Gr. WCB
2	Seat	Stainless Steel
3	Disc	Stainless Steel A351 Gr. CF8M
4	Spring	Inconel X-750
5	Shaft/Stop Pin	Stainless Steel A276 Gr. 316
6	Cap	Carbon Steel ASTM A105

DIMENSIONS & PERFORMANCE DATA														
SIZE	2	2.5	3	4	5	6	8	10	12	14	16	18	20	24
A	2.38	2.62	2.88	2.88	3.38	3.88	5.00	5.75	7.12	8.75	9.12	10.38	11.50	12.50
B	4.06	4.81	5.31	6.81	7.69	8.69	12.00	14.13	16.56	19.00	21.13	23.28	25.69	30.38
C	2.00	2.56	3.13	4.00	5.00	6.00	8.00	10.00	12.00	13.25	15.25	17.25	19.50	23.44
D	2.19	2.69	3.25	4.25	5.12	6.50	8.69	10.63	12.63	13.75	15.75	17.25	19.50	23.44
E	0.75	1.69	2.38	3.56	4.44	5.31	7.13	8.75	10.44	11.81	14.19	15.81	17.81	21.63
WT	5.5	8.0	10.0	15.5	23.5	36.0	66.0	102.0	156.0	236.0	302.0	390.0	540.0	670.0
Cx	62	110	175	350	550	850	1500	2400	3700	5400	8250	10400	14200	23000



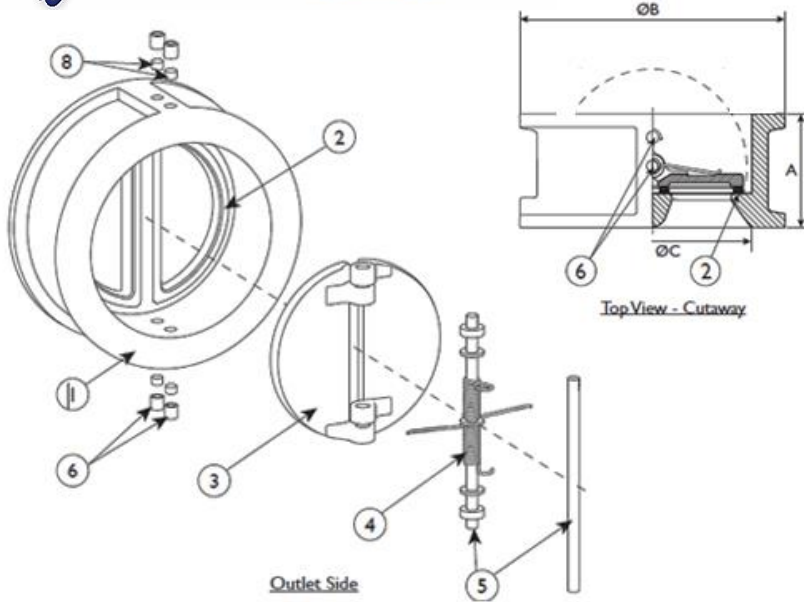
PRESS/TEMP RATINGS	
WOG	740PSI @ 100°F





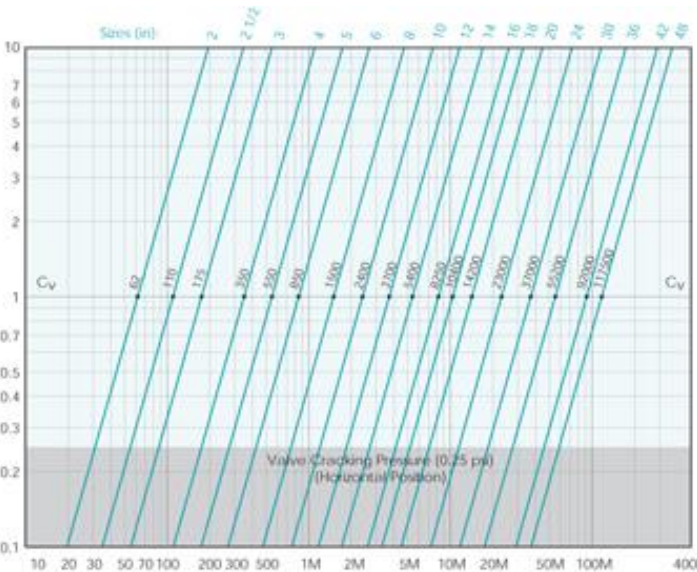
VCDD-CW3SXT Double Disc Check Valve

Wafer Style, Class 600, Carbon Steel Body, SS Disc, SS Seat

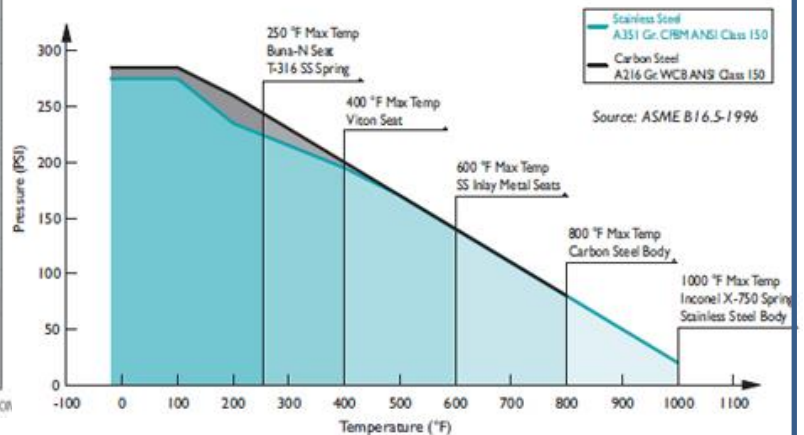


BILL OF MATERIALS		
NO.	PART	MATERIAL
1	Body	Carbon Steel A216 Gr. WCB
2	Seat	Stainless Steel
3	Disc	Stainless Steel A351 Gr. CF8M
4	Spring	Inconel X-750
5	Shaft/Stop Pin	Stainless Steel A276 Gr. 316
6	Cap	Stainless Steel A276 Gr. 316

DIMENSIONS & PERFORMANCE DATA														
SIZE	2	2.5	3	4	5	6	8	10	12	14	16	18	20	24
A	2.375	2.625	2.875	3.125	4.125	5.375	6.50	8.375	9.00	10.75	12.00	14.25	14.50	17.25
B	4.312	5.062	5.812	7.50	9.437	10.375	12.50	15.697	17.937	19.312	22.125	24.00	26.75	30.937
C	2.00	2.562	3.00	4.00	5.00	6.00	7.875	9.843	11.812	13.187	15.156	17.125	19.187	23.031
D	2.187	2.687	3.25	4.25	5.125	6.5	8.25	10.062	11.812	13.187	15.156	17.125	19.187	23.031
WT	6	13	12	20	35	57	109	207	300	420	627	820	1015	1690
Cx	45	95	140	200	400	580	1350	1850	2500	4800	5520	7500	10300	11100



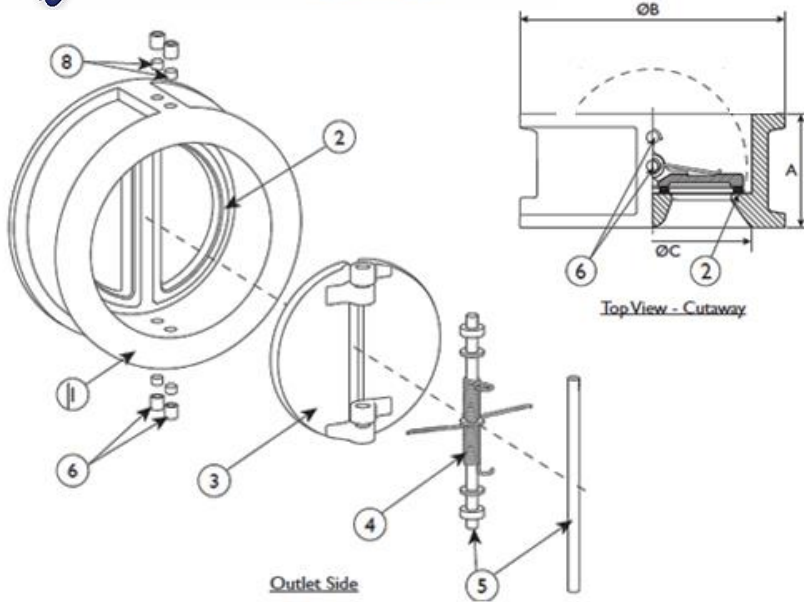
PRESS/TEMP RATINGS	
WOG	1480PSI @ 100°F





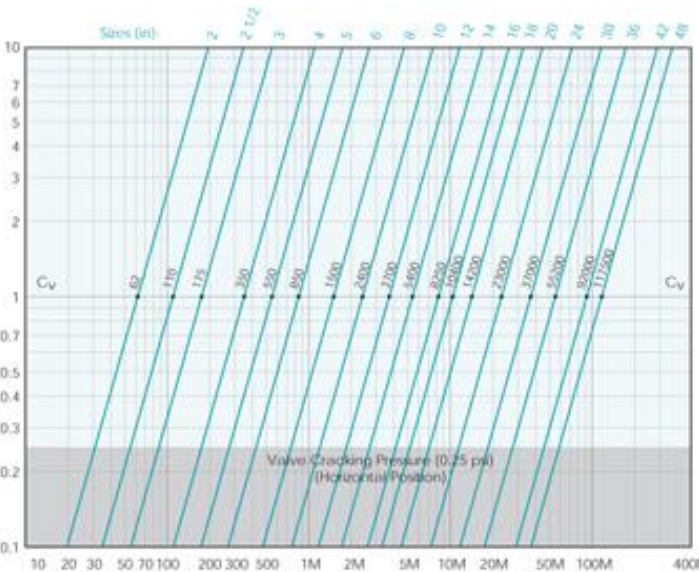
VCDD-CW4SXT Double Disc Check Valve

Wafer Style, Class 900, Carbon Steel Body, SS Disc, SS Seat



BILL OF MATERIALS		
NO.	PART	MATERIAL
1	Body	Carbon Steel A216 Gr. WCB
2	Seat	Stainless Steel
3	Disc	Stainless Steel A351 Gr. CF8M
4	Spring	Inconel X-750
5	Shaft/Stop Pin	Stainless Steel A276 Gr. 316
6	Cap	Stainless Steel A276 Gr. 316

DIMENSIONS & PERFORMANCE DATA														
SIZE	2	2.5	3	4	5	6	8	10	12	14	16	18	20	24
A	2.75	3.25	3.25	4.00	C/F	6.25	8.125	9.50	11.50	14.00	15.125	17.75	17.75	19.50
B	5.50	6.50	6.625	8.062	C/F	11.25	14.00	17.00	19.50	20.50	22.50	25.062	27.375	32.875
C	2.00	C/F	3.00	3.875	C/F	5.875	7.875	9.375	11.812	12.812	14.937	16.75	18.70	22.437
D	2.187	C/F	3.25	4.25	C/F	6.312	8.25	10.062	11.812	12.812	14.937	16.75	18.687	22.437
WT	13	19	22	38	66	178	300	465	655	875	1170	1322	1390	2650
Cx	40	80	120	190	380	500	1000	1500	1900	2900	4500	7000	9000	10800



PRESS/TEMP RATINGS	
WOG	2200PSI @ 100°F

