

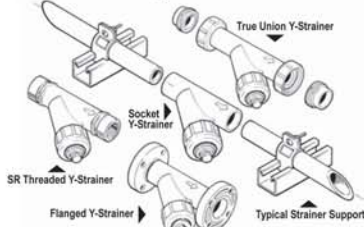
# Y-Strainer Installation Instructions



Y-Pattern Strainers may be mounted in either horizontal or vertical positions. However, attention should be paid to flow direction as indicated on the strainer body. The strainer basket should be pointed downward to properly collect sediment and facilitate flushing.

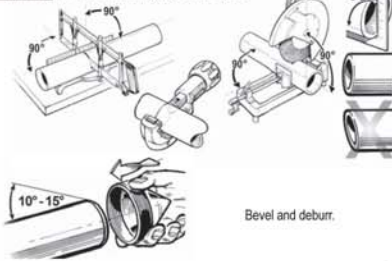
Read all applicable instructions & procedures thoroughly before starting. Suitability of the intended service application must be determined prior to installation. Plastic piping systems must be engineered, installed, operated and maintained in accordance with accepted standards and procedures for plastic piping systems. It is absolutely necessary that all design, installation, operation and maintenance personnel be trained in proper handling, installation requirements and precautions for installation and use of plastic piping systems before starting. Y-Strainers are designed for direct in-line installation without any adjustments.

See "Precautions and Warnings" for all installations in this instruction.



## SOLVENT CEMENT WELDED JOINTS

**STEP 1** Prepare connecting pipes as required.



Bevel and deburr.

## FLANGED CONNECTIONS

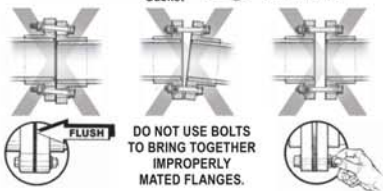
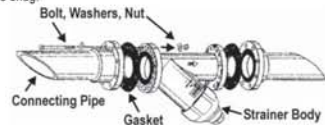
Once a flange is attached to the pipe or valve, the method of joining two flanges are as follows:



**STEP 1** Use of well lubricated bolts & flat washers are required. Use an anti-seize lubricant such as IMS Copper Flake.



**STEP 2** With a 1/8" gasket having a shore "A" durometer of approximately 60 in place, align the bolt holes of the mating flanges by rotating the ring into position. Insert all bolts, washers, and nuts. Tighten the nuts by hand until they are snug.



DO NOT USE BOLTS TO BRING TOGETHER IMPROPERLY MATED FLANGES.

SPECIAL SPLIT RING FLANGE INSTRUCTIONS FOR 3" & 4" STRAINERS



Place rings as shown over the flange hubs at each end of the strainer body. Insert new bolts, washers and nuts into new pipe system flanges, through gasket and into the split ring flange in alignment. Continue to instruction 3.

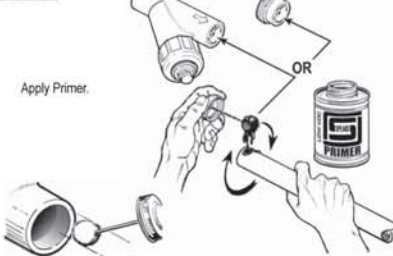
## BOLT TORQUES

Strainer Size	Torque Value
1/2" to 1-1/2"	12 ft. lbs.
2" to 4"	25 ft. lbs.
6" Venturied	40 ft. lbs.



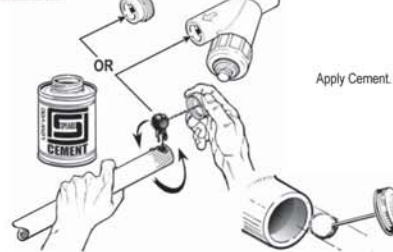
**CAUTION:** Care must be taken to prevent primer or cement contact with seat or internal strainer components. True Union style End Connectors should be removed from strainer body for installation.

**STEP 2**

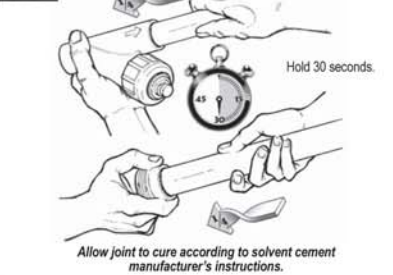


**THE MOST FREQUENT CAUSE OF JOINT FAILURE IS INADEQUATE PRIMER PENETRATION AND SOFTENING OF BONDING SURFACES DURING THE WELDING OPERATION.**

**STEP 3**



**STEP 4**



Allow joint to cure according to solvent cement manufacturer's instructions.

**STEP 5**



HAND TIGHTEN ONLY

DO NOT USE THE REMAINING UNION NUT TO DRAW TOGETHER ANY GAPS BETWEEN THE END CONNECTOR AND THE STRAINER BODY

## THREADED CONNECTIONS

**WARNING:** SOME PIPE JOINT COMPOUNDS OR PTFE PASTES MAY CONTAIN SUBSTANCES THAT COULD CAUSE STRESS CRACKING TO PLASTIC. TRANSITIONS TO METAL PIPE REQUIRE THOROUGH CLEANING AND DEGREASING TO REMOVE ANY PIPE THREAD CUTTING OIL.

Spears® Manufacturing Company highly recommends the use of Spears® BLUE 75™ thread sealant, which has been tested for compatibility with Spears® products.

**STEP 1**



**STEP 2**



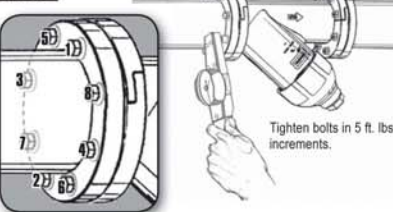
**STEP 3**



Only 1 to 2 turns beyond "FINGER TIGHT". Unnecessary OVER TIGHTENING will cause damage to both pipe and Y-Strainer socket.

Strainer Basket must be pointed DOWN for proper operation.

**STEP 3**

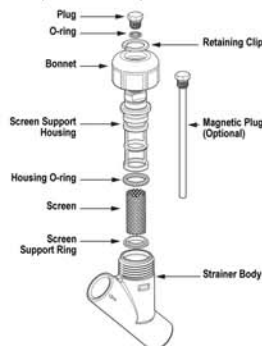


## MAINTENANCE & SERVICE INSTRUCTIONS

The Screen Support Housing can be easily accessed from the Bonnet Nut for screen replacement or internal component service. **CAUTION:** Before servicing, the system should be shut down, depressurized and drained.

**STEP 1**

Remove Bonnet Nut by turning it in a counterclockwise direction. NOTE: Screen housing is attached to the inside of the bonnet nut and will slide out when nut is removed. Remove Screen Support Ring and Screen. Clean all components and replace as necessary. To service or replace O-ring, remove Retaining Clip from top of Bonnet Nut and separate Screen Support Housing from Bonnet Nut. Examine O-rings for debris or damage. Clean or replace as necessary.



**STEP 2**

Reinstall Screen into Screen Support Housing, and then install Screen Support Ring. NOTE: Make sure that tabs on Screen Support Ring are aligned properly with end of Screen Support Housing before snapping into place. Apply a mild soap & water solution to O-ring and slide the reassembled Screen Support Housing back into the Strainer Body. NOTE: If O-ring was serviced, insert Screen Support Housing into Bonnet Nut and reinstall Retaining Clip. Turn Bonnet Nut in a clockwise direction until properly seated.

## QUICK FLUSH

**STEP 1**

Depressurize system (Or install a Bleed-off valve) and remove O-ring sealed Drain plug.

**STEP 2**

Flush to remove debris.

**STEP 3**

Re install drain plug. Tighten snug.



## PRECAUTIONS AND WARNINGS

**CAUTION:** The system must be designed and installed so as not to pull the components in any direction. Pipe system must be cut and installed in such a manner as to avoid all stress loads associated with bending, pulling, or shifting. All piping systems must be supported.

**CAUTION:** BEFORE THE VALVE IS CYCLED, all dirt, sand grit or other material shall be flushed from the system. This is to prevent scarring of internal components.

**WARNING:** System should not be operated or flushed out at flow velocities greater than 5 feet per second.

**WARNING:** All air must be bled from the system during the initial fluid fill. Pressure testing of the system must not be made until all solvent cement joints have properly cured. Initial pressure testing must be made at approximately 10% of the system hydrostatic pressure rating to identify potential problems prior to testing at higher pressures.

NOT FOR DISTRIBUTION OF COMPRESSED AIR OR GAS.



STAYFLOW Chicago, IL  
312.428.4750

www.stayflowproducts.com  
sales@stayflowproducts.com